



Present

Fun & Flirty Halloween!

Basic Top

Supplies:

Fabric for top, 1 yard lightweight cotton, sateen, satin
 1 package $\frac{3}{4}$ " non-roll elastic
 VELCRO® brand hook and loop fastener
 Matching all purpose thread

Pattern:

Choose size then print the PDF pattern for the Basic Top and cut out pattern pieces.

Cutting:

· Cut 1-upper bodice on fold, Cut 4-lower side bodice, Cut 1-lower center front bodice on fold, Cut 2- lower center back bodice.

Construction:

- Starting with lower center front bodice piece, attach the lower side bodices matching notches, stitch $\frac{1}{2}$ " seam. Attach a lower side bodice to each of the lower center back pieces, matching notches and stitch $\frac{1}{2}$ " seam. Connect lower bodice front to lower bodice sides, matching notches and stitch $\frac{1}{2}$ " seam.
- On upper bodice piece, baste between notches on front to gather for under bust. Match upper bodice to lower bodice piece, matching notches, stitch $\frac{1}{2}$ " seam
- Double fold hem lower edge of top $\frac{1}{2}$ ". Press then stitch hem to secure.
- Double fold hem center back edges $\frac{1}{2}$ ". Press then stitch to secure.
- Fold upper bodice edge $\frac{1}{2}$, then 1" creating casing. Stitch close to casing edge.
- Insert elastic through ends of casing. Stitch through one end of elastic to secure, then fit top. Adjust length of elastic then stitch through remaining end to secure. Trim elastic ends so they do not show!
- To close center back of top, apply VELCRO® brand hook and loop fastener following instructions on packaging. We used the fusible Fabric Fusion™ variety on most fabrics, and sew-on Soft and Flexible™ on the fabrics that could not have heat applied. *Tip: Round edges of ends of VELCRO® brand hook and loop fastener before applying to top to keep sharp edges at bay!!*

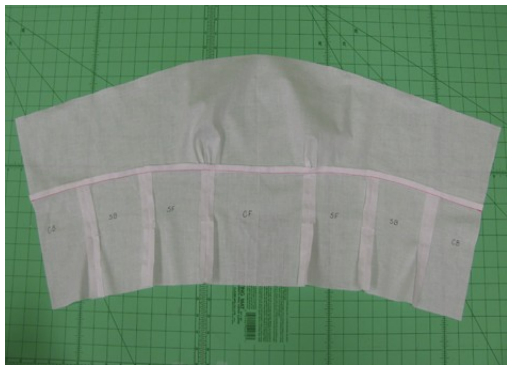
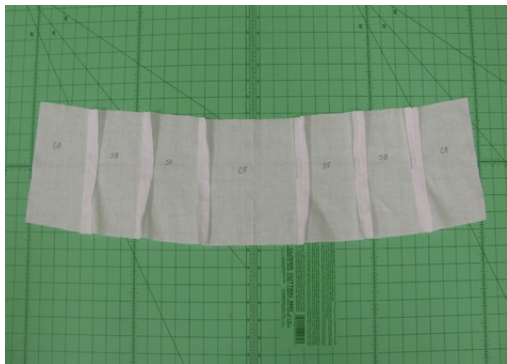


Photo credit: Rick Stephens

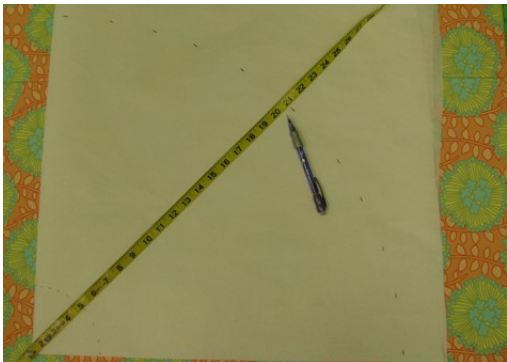
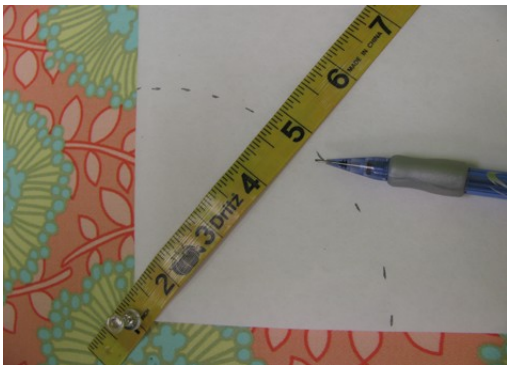


Photo credit: Rick Stephens



Present

Fun & Flirty Halloween!

Basic Circle Skirt

Waist Radius:

Size XS-24" waist—3 3/4" from point

Size S-26" waist—4 1/8" from point

Size M-28" waist—4 1/2" from point

Size L-30" waist—4 3/4" from point

Size XL-32" waist—5 1/8" from point

Supplies:

Fabric for skirt, approximately 1 1/2 yards.

Bias tape in color to match skirt fabric

VELCRO® brand hook and loop fastener

Matching all purpose thread

Drafting skirt pattern:

Note: You will need a surface you can pin into to create the circle skirt pattern!

- Mark measurement for waist radius per size (see above) on an old measuring tape. At this mark make a small hole in the tape measure (you can use an awl or large needle).
- Fold wrapping paper or other large size paper in fourths making sure the edges are square. You will be drawing 3/4 of the circle...when the paper is unfolded you will have the full circle. J
- Place thumbtack in measure tape at 0 in and align it with the very tip of the folded point of the paper. Hold in place.
- With the other hand, place a pencil in the hole of the tape measure at your radius measurement.
- Keeping the measuring tape taught, rotate the pencil to create an arc from one edge of the paper to the other. This is the waist of the skirt.
- Once the waist is drawn, measure down the desired length of the finished skirt (ours were about 18"), draw another arc. This is the finished length of the skirt.
- Add 1/2" to above waist line marking, and 1" below finished length mark for seam and hem allowances.

Cutting:

- Open skirt pattern and cut one skirt single layer from skirt fabric.
- Draw a straight line from waist to hem (it does not matter where), then cut skirt open along this marking.



Present

Fun & Flirty Halloween!

Basic Circle Skirt Page 2

(Continued)

Construction:

- Right sides together, match skirt seam. Stitch $\frac{1}{2}$ " seam from hem to waist, stopping 6" from waist.
- At waistline, pin bias tape along raw edge, right sides together. Stitch at $\frac{1}{4}$ " away from raw edge to secure to waist.
- Press bias tape to wrong side of skirt at waist. Stitch $\frac{3}{8}$ " from waistline edge, securing bias.
- Fold opening seam allowances to wrong side, along $\frac{1}{2}$ " seam line. Stitch $\frac{3}{8}$ " from edges to secure in place.
- For skirt closure, cut 2" pieces of VELCRO® brand hook and loop fastener. Apply VELCRO® brand hook and loop fastener following instructions on packaging. Press or sew the loop piece on the wrong side of the left side of back opening, vertically along edge. Press or sew the hook piece on the right side of the right side of back opening, horizontally along waistline edge. We used the fusible Fabric Fusion™ variety on most fabrics, and sew-on Soft and Flexible™ on the fabrics that could not have heat applied.

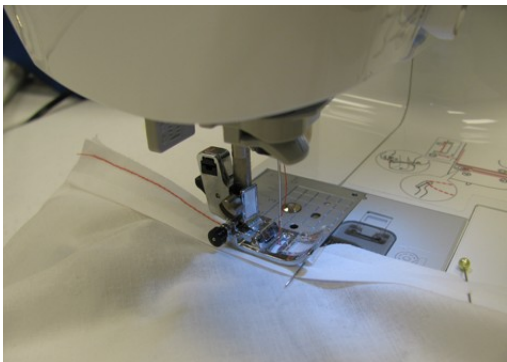


Photo credit: Rick Stephens

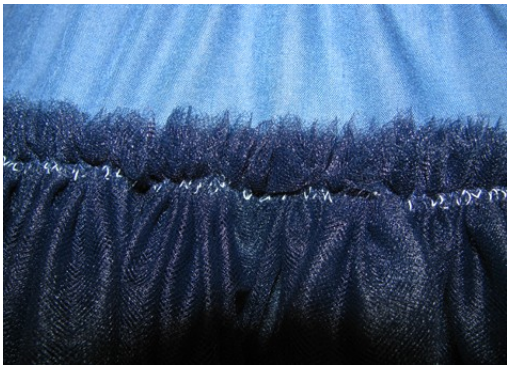
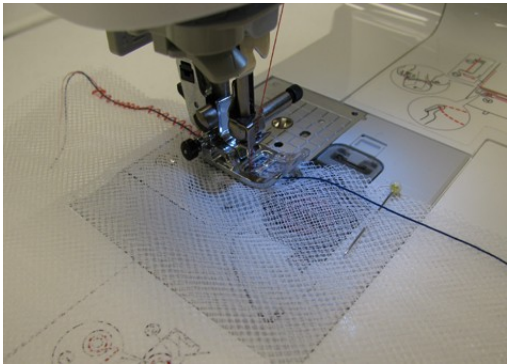


Photo credit: Rick Stephens



Present

Fun & Flirty Halloween!

Basic Tulle Underskirt

Supplies:

- 10 yards of tulle netting
- $\frac{3}{8}$ yard of 45" solid broadcloth for waistband
- 1 yard of $\frac{3}{4}$ " non-roll elastic
- Pearl cotton or heavy topstitch thread (for stitching over to gather)

Cutting:

Leave tulle folded, so that you have 4 layers, approximately 15" wide. Trim broadcloth to 10" x 45".

Construction:

- Set sewing machine for a wide zig-zag stitch. On folded long edge of tulle, stitch over pearl cotton or topstitch thread, creating a "tunnel" for the heavy thread to move through. Position thread so that it is approximately $\frac{1}{2}$ " away from the fold. Be sure to leave a tail of thread at the start, attach heavy thread along the entire length of the 10 yards of tulle. Be sure not to catch the heavy thread in the zig-zag stitch...it needs to move freely so you can gather the tulle.
- Pull up on the heavy thread, gathering the tulle to fit the width of the long edge of the broadcloth piece. Pin gathered tulle in place, along the long edge of broadcloth piece, about 1" from the raw edge. Stitch in place to secure.
- Right sides together, match sides of tulle skirt, stitch $\frac{1}{2}$ " seam, press open.
- On skirt upper edge, finish raw edge with zig-zag or serger. Turn under 1" for casing, press in place then stitch close to finished edge, leaving opening for elastic.
- Measure elastic to waist. Insert elastic, adjust, then overlap ends and stitch to secure. Stitch to close opening.



Find us on
Facebook

Visit us at

Velcro® brand fasteners and DIYStyle®