

TOP

DIYStyle® - Velcro®  
Costume Outfit Woven  
Two Piece Outfit - Top  
Lower bodice piece - CF & CB  
CF w/o fold extension  
CB with extension

CF cut 1 on fold from self  
CB cut 2 from self

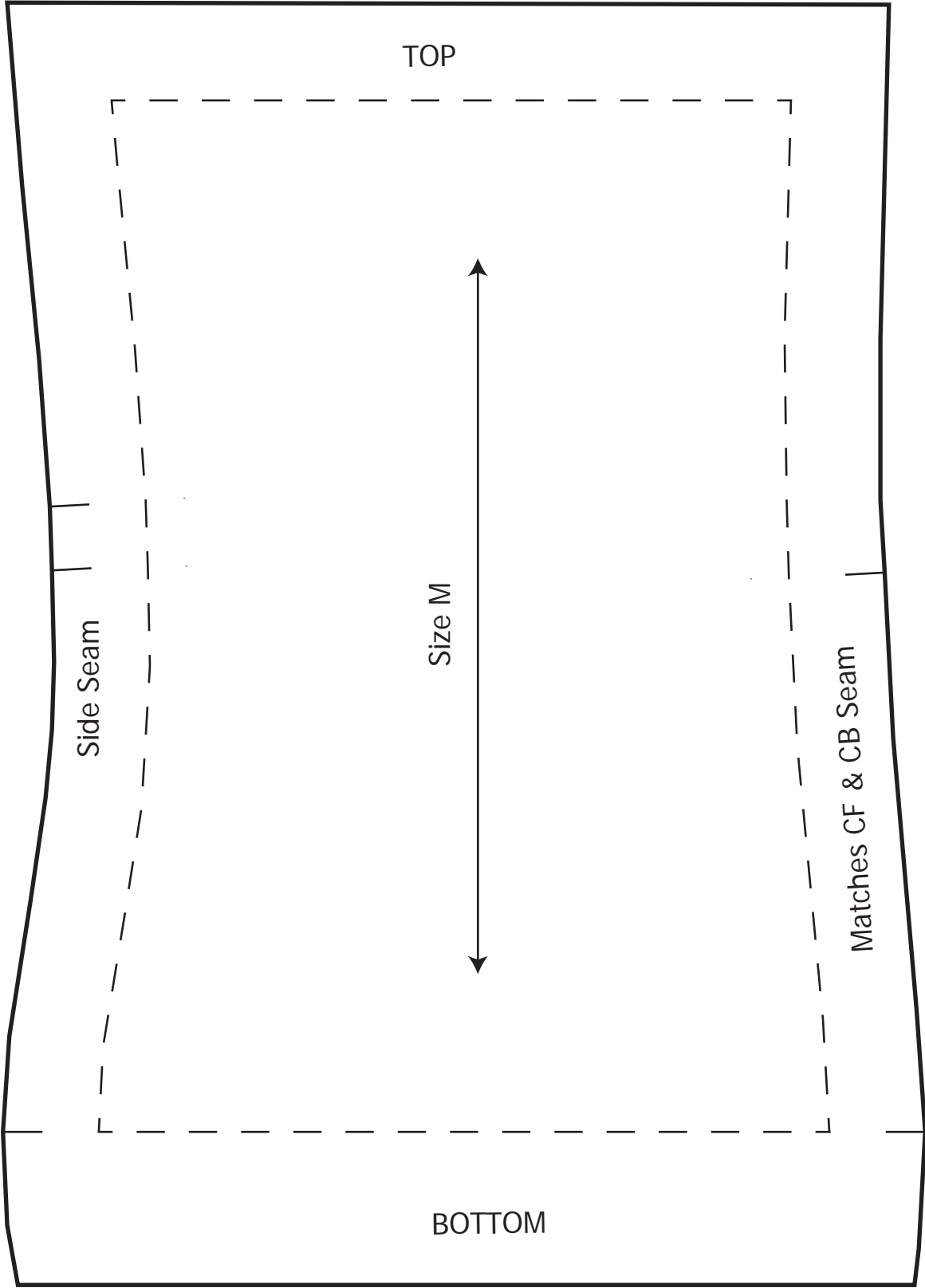
Matches Side Bk & Side Fr Seam

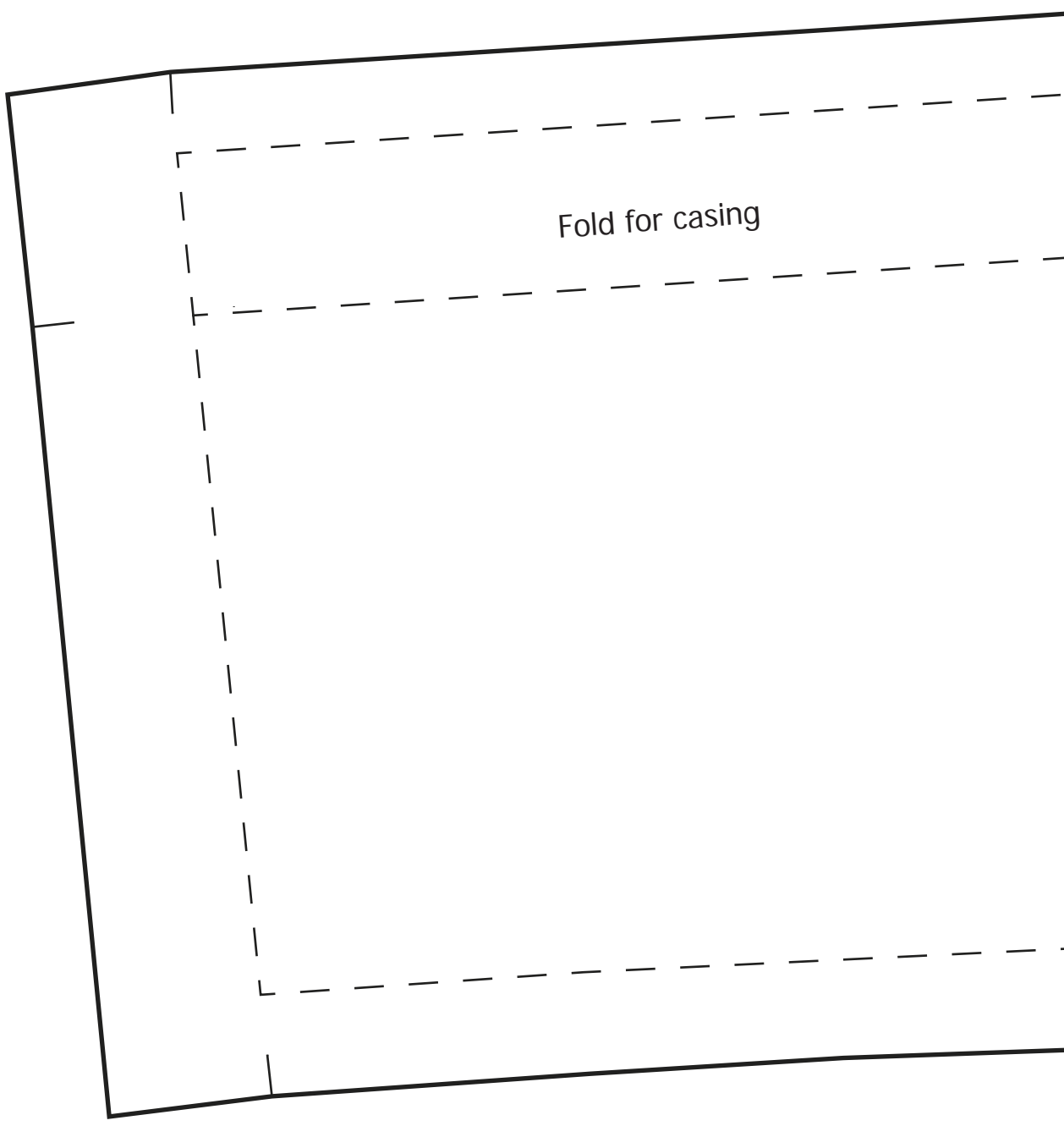
CF cut On Fold

Size M

Fold Extension

BOTTOM





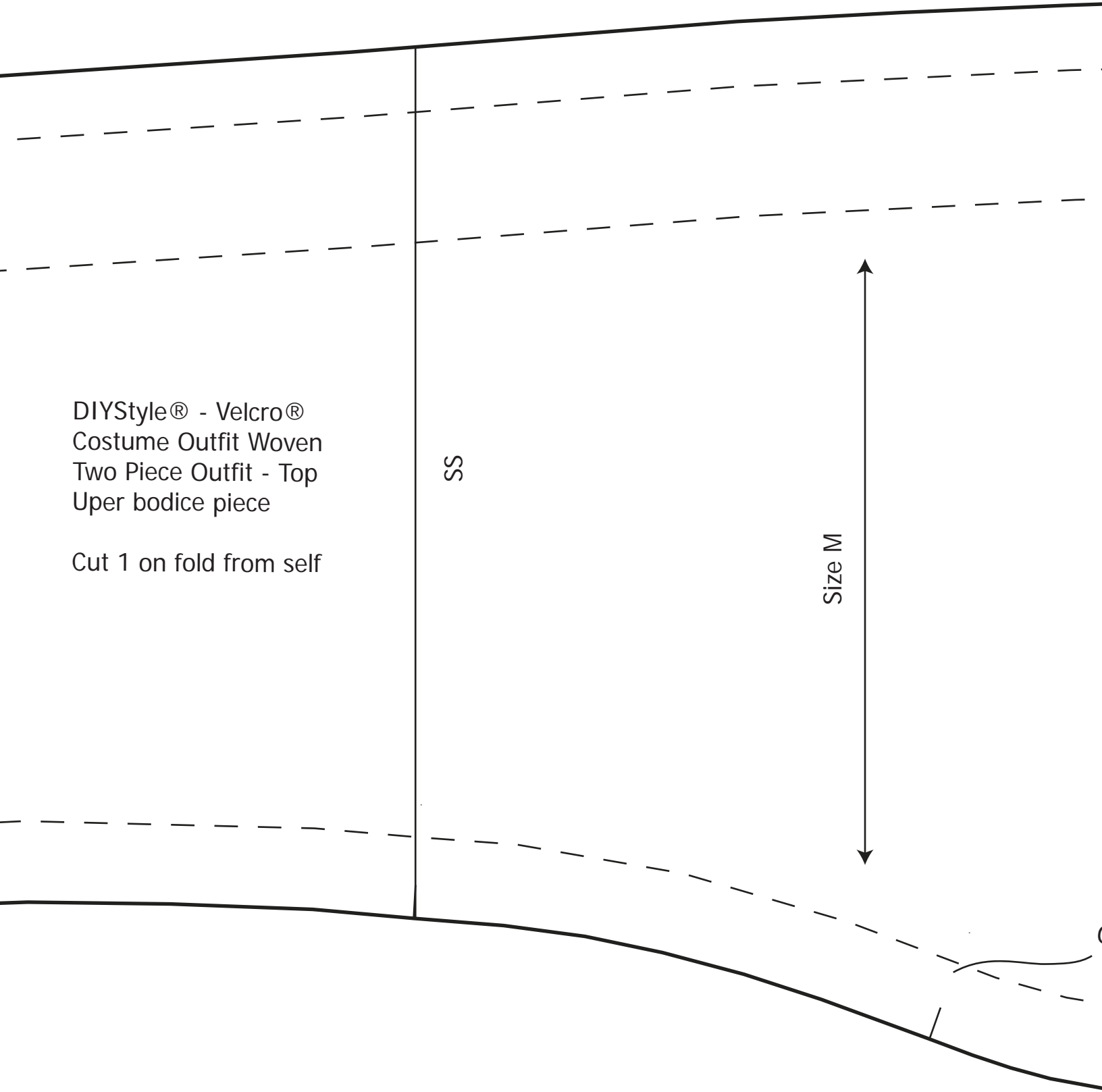
Fold for casing

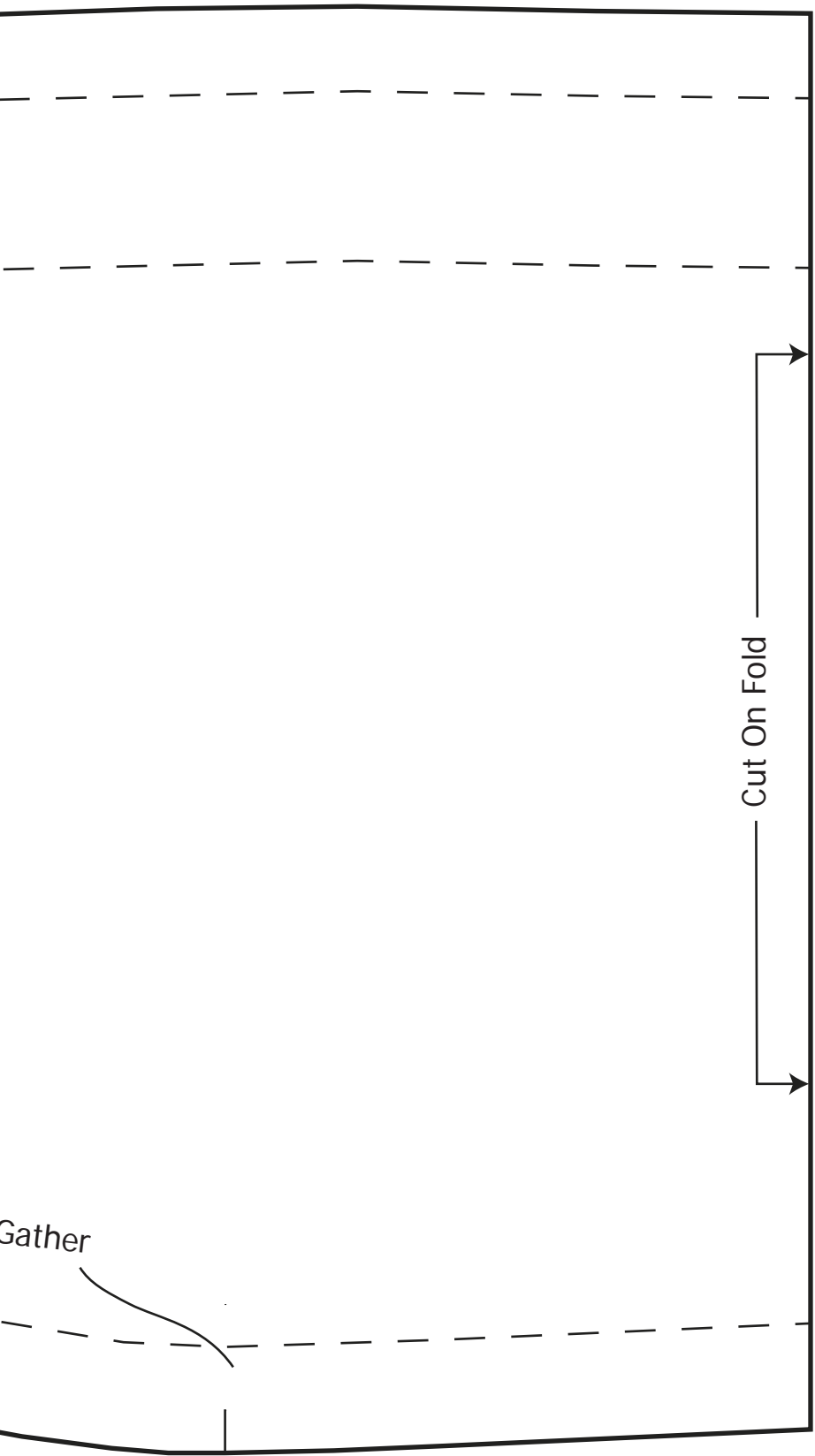
DIYStyle® - Velcro®  
Costume Outfit Woven  
Two Piece Outfit - Top  
Upper bodice piece

Cut 1 on fold from self

SS

Size M





Gather

Cut On Fold